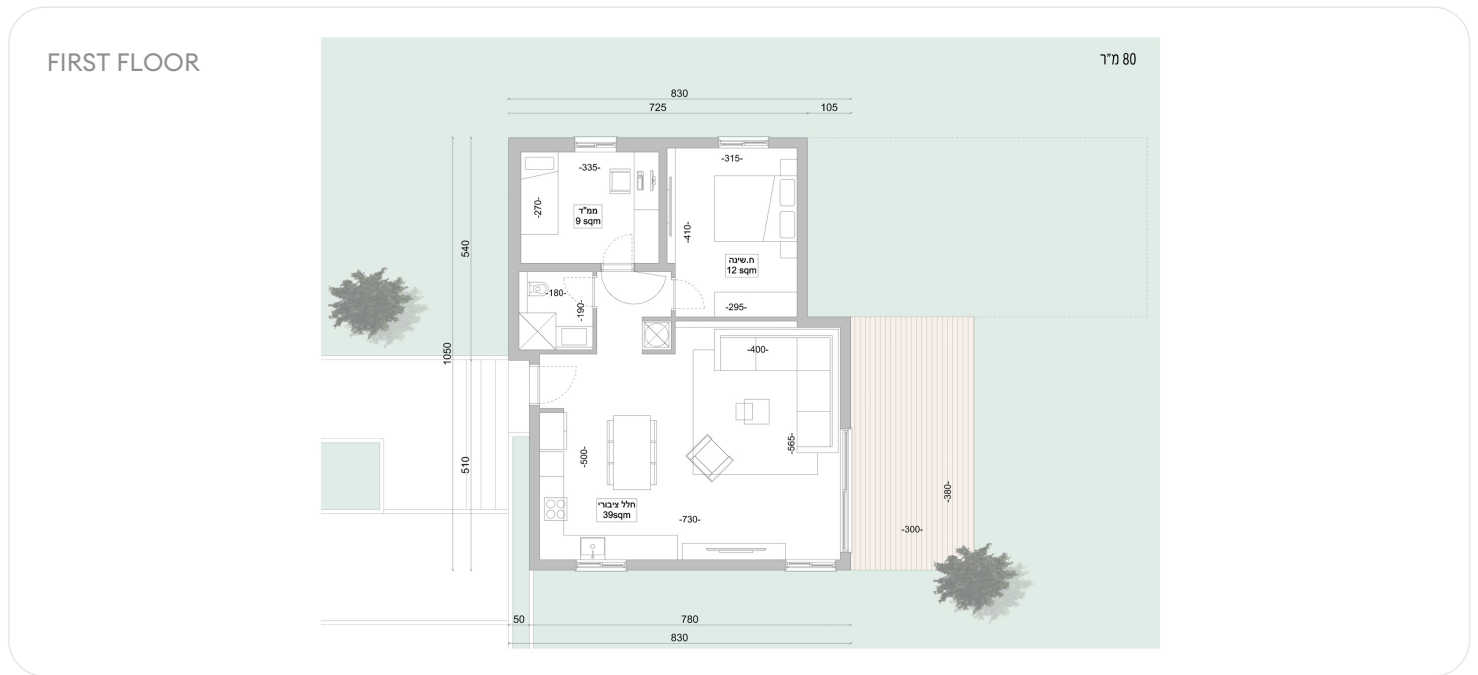


04.06.2026

PRIVATE HOUSE 522, 80 M<sup>2</sup>

Yafit, YAFT-522



|                       |               |                                    |
|-----------------------|---------------|------------------------------------|
| Property type         | Private House | <b>PRICE</b><br><b>₪ 1 460 000</b> |
| Rooms                 | 3             |                                    |
| Floors                | 1             |                                    |
| Balcony               | no            |                                    |
| Garden                | no            |                                    |
| Planned delivery date | 2Q 2028       |                                    |

HOUSE LOCATION



04.06.2026

## EXTERIOR



## INTERIOR



We're proud to present our expandable home model: a smartly designed home tailored for growing families. The house is uniquely positioned at the edge of the plot, allowing for future expansion from 80 square meters up to 220 square meters without compromising garden space. This is a smart investment that lets you start small and expand your home as your needs and finances grow.

DOWNLOAD BROCHURE (PDF)

160

families live in this community

35

minutes by car from Ariel

19

residential units located here

2028

delivery date

## CONTACTS



**SHLOMO BEN DAVID**

International Sales Manager

+16468094577 +972534648451



**CHECK OUT THE ASSET PAGE ON OUR WEBSITE**

On the website you will see more detailed information about the lot, and you will also be able to leave a request for a consultation