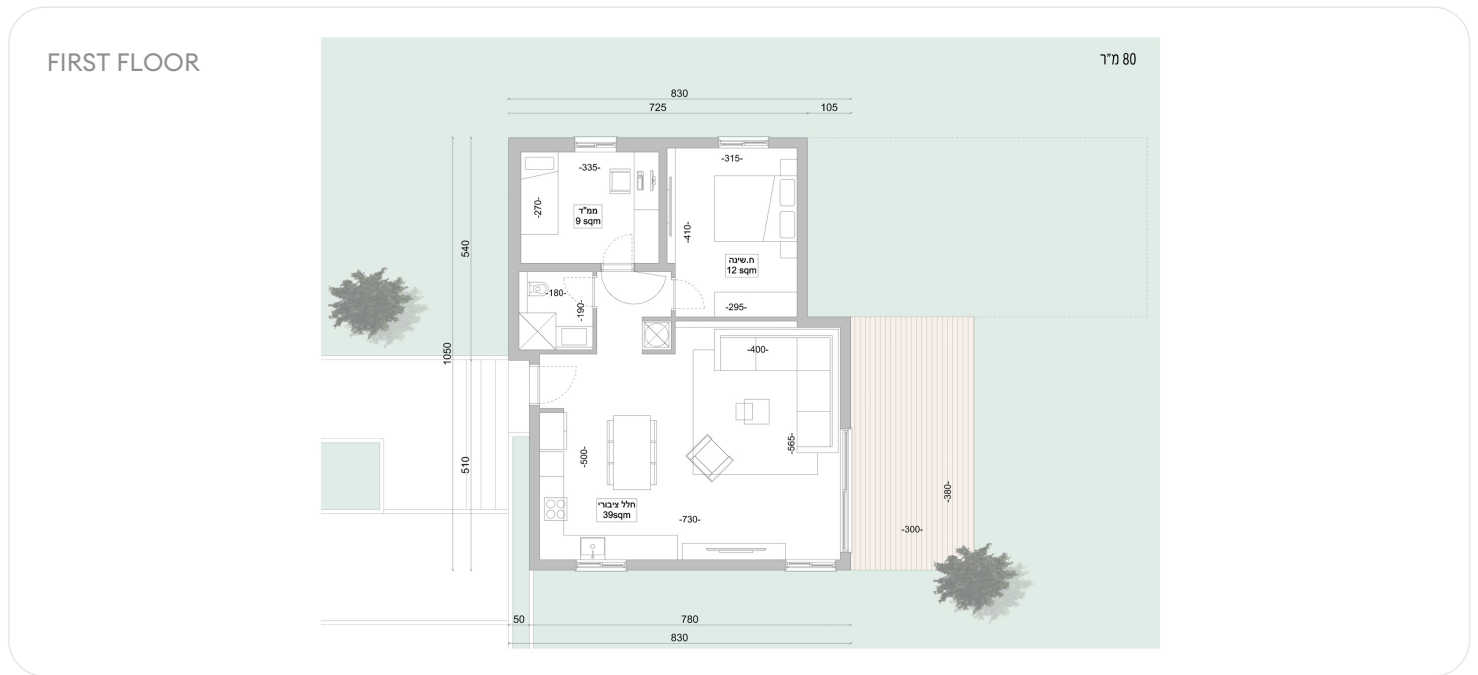


04.06.2026

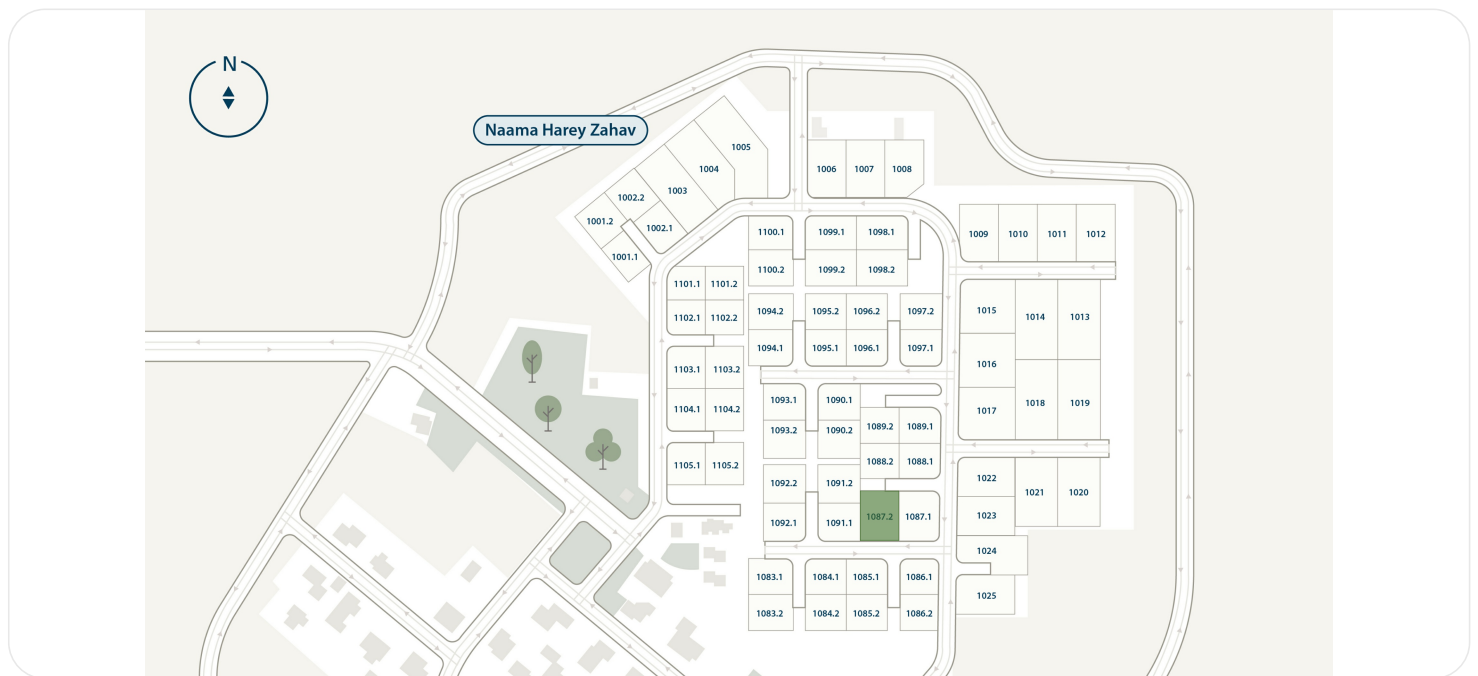
PRIVATE HOUSE 1087-2, 80 M<sup>2</sup>

Naama, NAAM-321-1087/2



Property type	Private House	<b>PRICE</b> <b>₪ 1 550 000</b>
Rooms	3	
Floors	1	
Balcony	no	
Garden	no	
Planned delivery date	1Q 2028	

HOUSE LOCATION



04.06.2026

## EXTERIOR



## INTERIOR



Meet the home designed with the future in mind: our expandable home model. The smart design starts with an 80-square-meter house situated at the edge of a spacious  $\frac{3}{4}$ -dunam plot, with the option to expand the living space up to 220 square meters when you need it. Whether you want to add a child's room, set up a clinic, or open a studio, this is a home that grows with you. The layout ensures that even with expansions, the full garden area is preserved, so you can enjoy green spaces alongside a home that evolves.

[DOWNLOAD BROCHURE \(PDF\) !\[\]\(3e2231b1ad3ca8da8658228c00dd08e0\_img.jpg\)](#)

80

families live in this community

33

minutes from Jerusalem

73

residential units located here

2028

delivery date

## CONTACTS

**SHLOMO BEN DAVID**

International Sales Manager

 +16468094577  +972534648451**CHECK OUT THE ASSET PAGE ON OUR WEBSITE**

On the website you will see more detailed information about the lot, and you will also be able to leave a request for a consultation