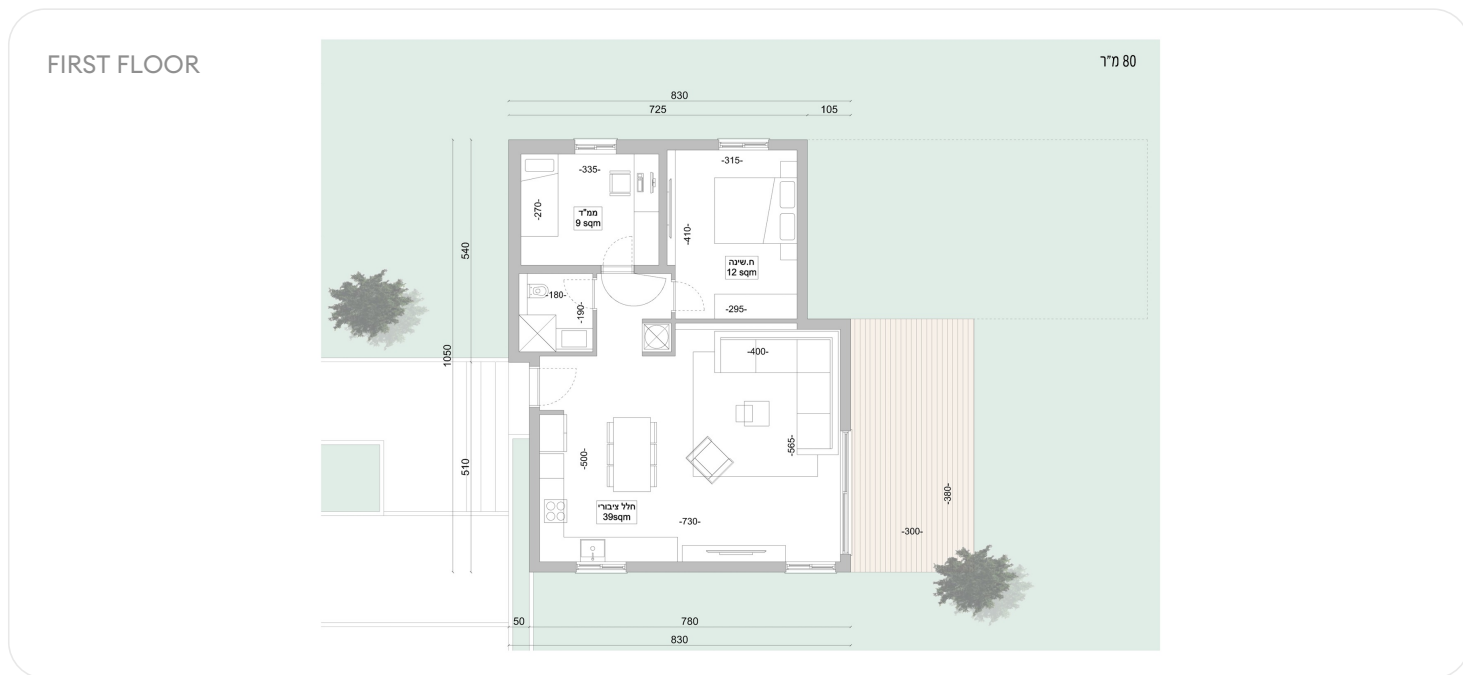


04.06.2026

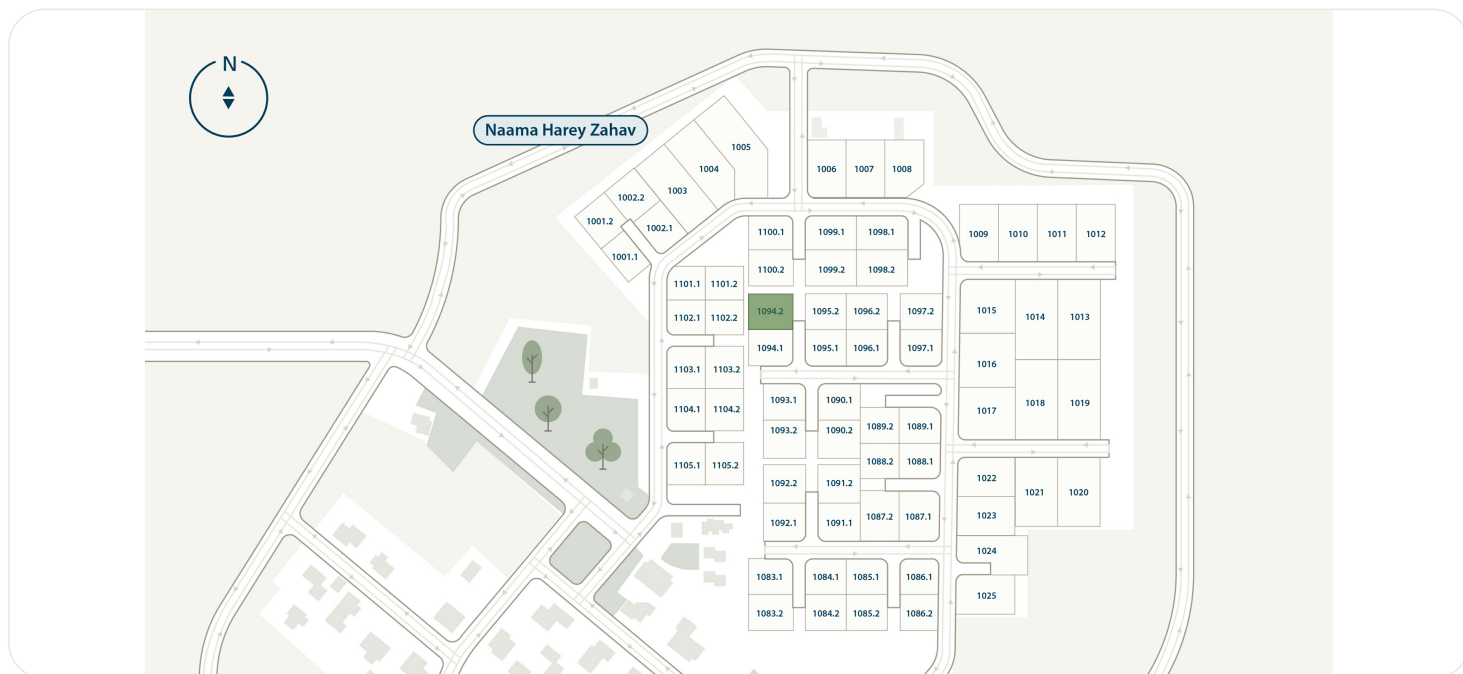
PRIVATE HOUSE 1094-2, 80 M²

Naama, NAAM-321-1094/2



Property type	Private House	PRICE ₪ 1 550 000
Rooms	3	
Floors	1	
Balcony	no	
Garden	no	
Planned delivery date	1Q 2028	

HOUSE LOCATION



04.06.2026

EXTERIOR



INTERIOR



Meet the home designed with the future in mind: our expandable home model. The smart design starts with an 80-square-meter house situated at the edge of a spacious $\frac{3}{4}$ -dunam plot, with the option to expand the living space up to 220 square meters when you need it. Whether you want to add a child's room, set up a clinic, or open a studio, this is a home that grows with you. The layout ensures that even with expansions, the full garden area is preserved, so you can enjoy green spaces alongside a home that evolves.

DOWNLOAD BROCHURE (PDF) 

80

families live in this community

33

minutes from Jerusalem

73

residential units located here

2028

delivery date

CONTACTS



SHLOMO BEN DAVID

International Sales Manager

 +16468094577  +972534648451



CHECK OUT THE ASSET PAGE ON OUR WEBSITE

On the website you will see more detailed information about the lot, and you will also be able to leave a request for a consultation