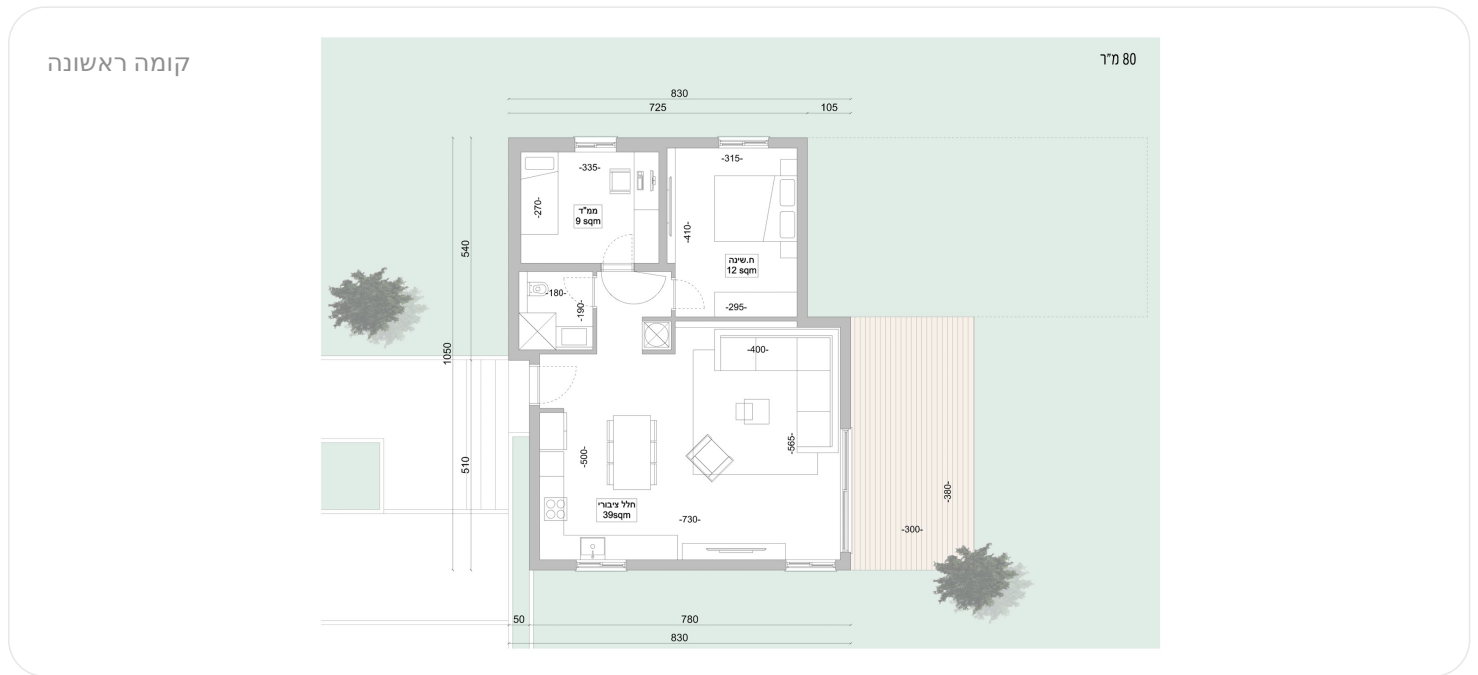


04.06.2026

PRIVATE HOUSE 1090-1, 80 M<sup>2</sup>

Naama, NAAM-321-1090/1



סוג הנכס	בית פרטי	<b>PRICE</b> <b>1 550 000 ₪</b>
שטח מגרש, מ"ר	795.15	
שטח במ"ר	80	
חדרים	3	
קומות	1	
מרפסת	לא	
גינה	לא	
תאריך מסירה משוער	1Q 2028	

HOUSE LOCATION

## EXTERIOR



## INTERIOR



Meet the home designed with the future in mind: our expandable home model. The smart design starts with an 80-square-meter house situated at the edge of a spacious  $\frac{3}{4}$ -dunam plot, with the option to expand the living space up to 220 square meters when you need it. Whether you want to add a child's room, set up a clinic, or open a studio, this is a home that grows with you. The layout ensures that even with expansions, the full garden area is preserved, so you can enjoy green spaces alongside a home that evolves.

[DOWNLOAD BROCHURE \(PDF\) !\[\]\(3e2231b1ad3ca8da8658228c00dd08e0\_img.jpg\)](#)

80

families live in this community

33

minutes from Jerusalem

73

residential units located here

2028

delivery date

## CONTACTS

**SHLOMO BEN DAVID**

International Sales Manager

[!\[\]\(c15650232aa6660c9deb34f3b82dcb72\_img.jpg\) +16468094577](tel:+16468094577) [!\[\]\(5daf7861f728ee981062447bbfa4ced8\_img.jpg\) +972534648451](tel:+972534648451)**CHECK OUT THE ASSET PAGE ON OUR WEBSITE**

On the website you will see more detailed information about the lot, and you will also be able to leave a request for a consultation