

04.06.2026

DOUBLE ROOF 264-6, 165 M<sup>2</sup>

Maale Efraim, MLEF-264-6

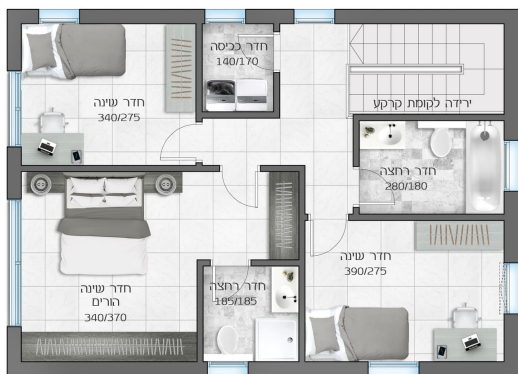
FIRST FLOOR

דגם ירדן  
קומה -1  
5 חדרים + מרפסת  
שטח דירה 165 מ"ר



SECOND FLOOR

דגם ירדן  
קומה 1  
5 חדרים + מרפסת  
שטח דירה 165 מ"ר



Property type

Two families with roof

PRICE

Rooms

5

₪ 1 980 000

Balcony

yes

Garden

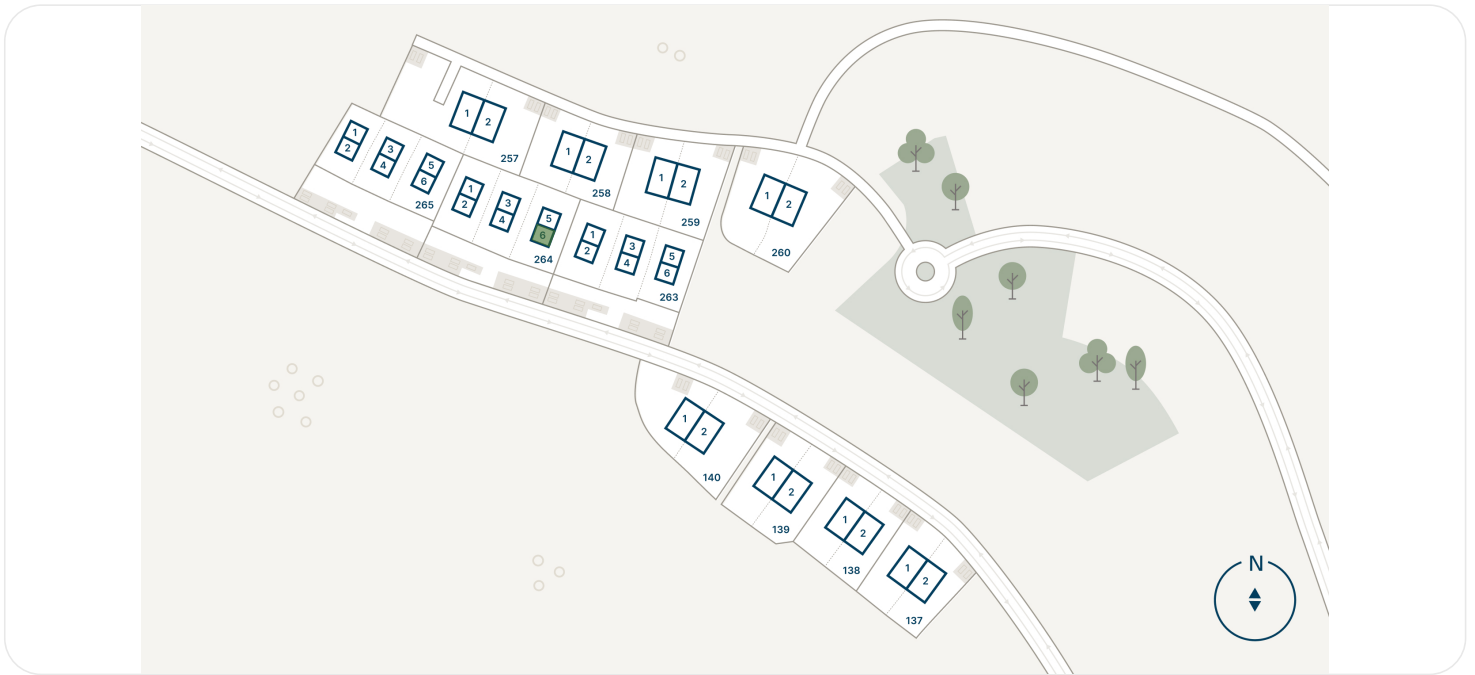
no

Planned delivery date

4Q 2027

04.06.2026

## HOUSE LOCATION



## EXTERIOR



We're proud to present our spacious duplex apartments: 160 square meters of carefully designed living space, available in two styles. Choose a garden duplex with a private yard (perfect for plant enthusiasts) or a rooftop duplex with a panoramic balcony (ideal for stargazers). These homes are offered at attractive prices that are only set to rise – an exceptional opportunity to invest smartly in a growing city with immense potential.

DOWNLOAD BROCHURE (PDF) 

450

families live in this community

20

minutes by car from Ariel

34

residential units located here

2028

delivery date

## CONTACTS



**SHLOMO BEN DAVID**

International Sales Manager

 +16468094577  +972534648451



**CHECK OUT THE ASSET PAGE ON OUR WEBSITE**

On the website you will see more detailed information about the lot, and you will also be able to leave a request for a consultation