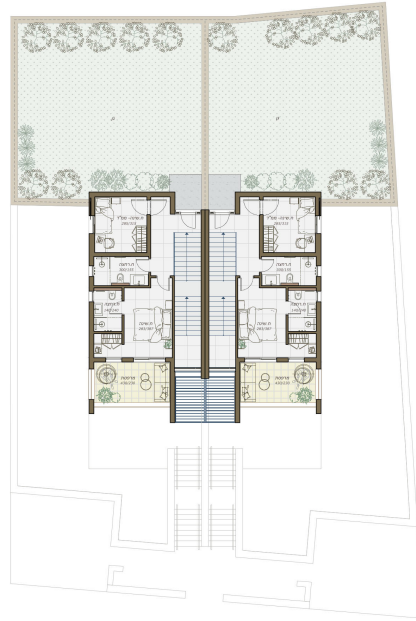
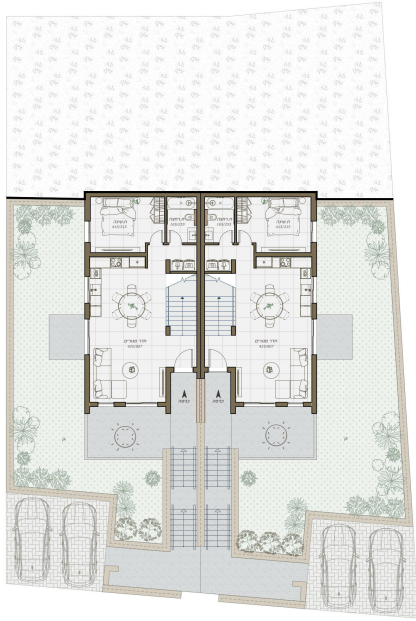


TWO FAMILIES 1210-1, 124.85 M<sup>2</sup>

Teneh Omarim, TOMA-1210-1

קומה ראשונה



סוג הנכס

דו משפחתי

PRICE

שטח מגרש, מ"ר

328

1 990 000 ₪

שטח במ"ר

124.85

חדרים

4

קומות

1

מרפסת

ק

גינה

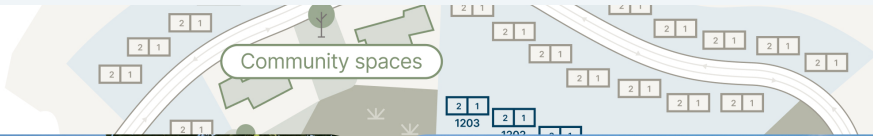
ק

תאריך מסירה משוער

3Q 2029

HOUSE LOCATION

## EXTERIOR



## INTERIOR



Our new neighborhood is carefully designed along the mountainside with a breathtaking desert view – 135 earth-toned homes that look like the contractor and the desert decided to start an Instagram page together. The architectural vision is refreshingly original – homes are arranged in a fan shape, with each garden offering a unique perspective, perfect for stargazing right from your backyard. Smart planning creates a sense of community while allowing for a bit of privacy for each family.

DOWNLOAD BROCHURE (PDF) 

200

families live in this community

20

minutes from Beer Sheva

135

residential units located here

2028

delivery date

## CONTACTS



**SHLOMO BEN DAVID**

International Sales Manager

 +16468094577  +972534648451



**CHECK OUT THE ASSET PAGE ON OUR WEBSITE**

On the website you will see more detailed information about the lot, and you will also be able to leave a request for a consultation