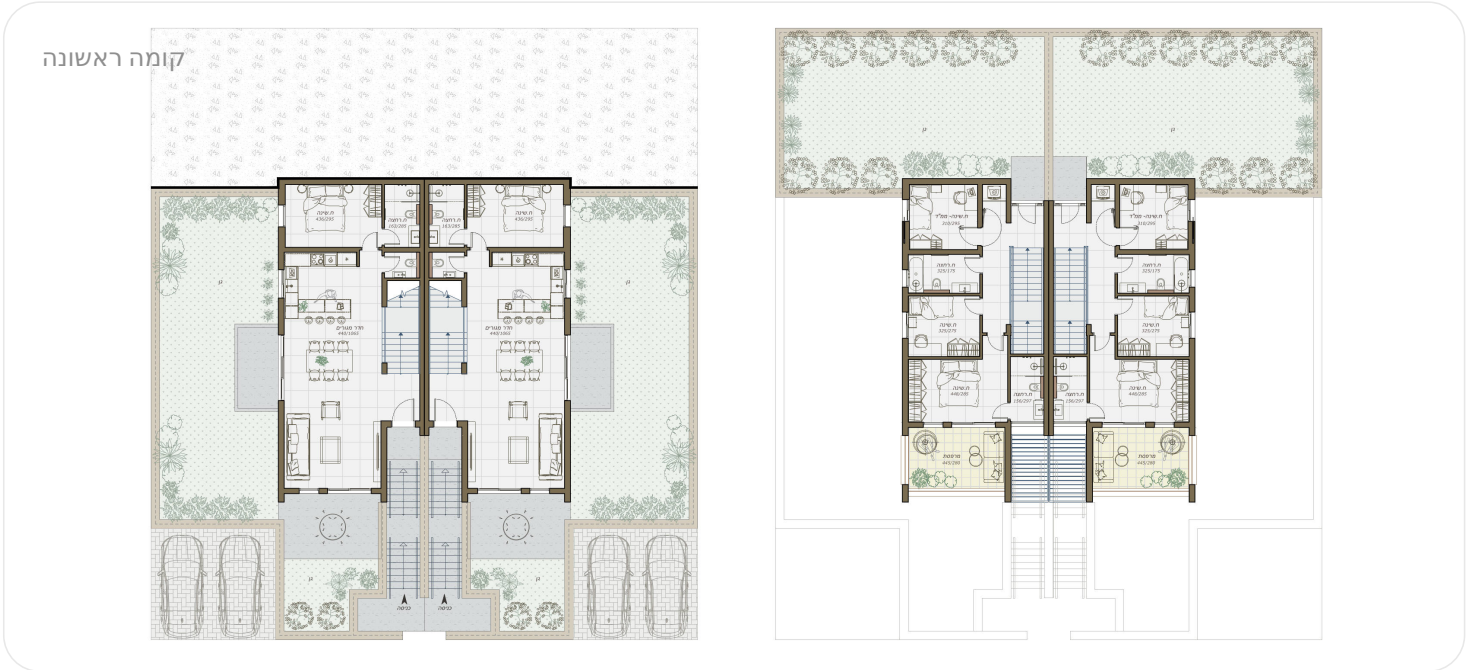


TWO FAMILIES 1204-1, 157.78 M²

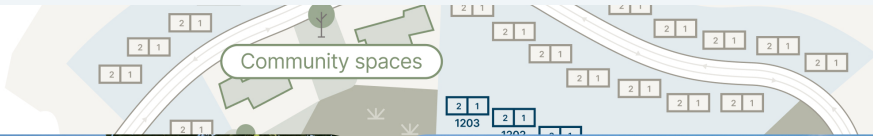
Teneh Omarim, TOMA-1204-1



סוג הנכס	דו משפחתי	PRICE 2 350 000 ₪
שטח מגרש, מ"ר	346	
שטח במ"ר	157.78	
חדרים	5	
קומות	1	
מרפסת	ק	
גינה	ק	
תאריך מסירה משוער	3Q 2029	

HOUSE LOCATION

EXTERIOR



INTERIOR



Our new neighborhood is carefully designed along the mountainside with a breathtaking desert view – 135 earth-toned homes that look like the contractor and the desert decided to start an Instagram page together. The architectural vision is refreshingly original – homes are arranged in a fan shape, with each garden offering a unique perspective, perfect for stargazing right from your backyard. Smart planning creates a sense of community while allowing for a bit of privacy for each family.

[DOWNLOAD BROCHURE \(PDF\)](#)


200 families live in this community

20 minutes from Beer Sheva

135 residential units located here


2028 delivery date

CONTACTS



SHLOMO BEN DAVID
International Sales Manager

+16468094577 +972534648451



CHECK OUT THE ASSET PAGE ON OUR WEBSITE

On the website you will see more detailed information about the lot, and you will also be able to leave a request for a consultation