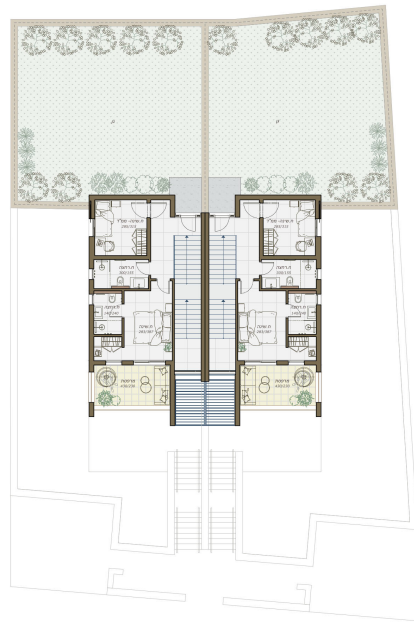
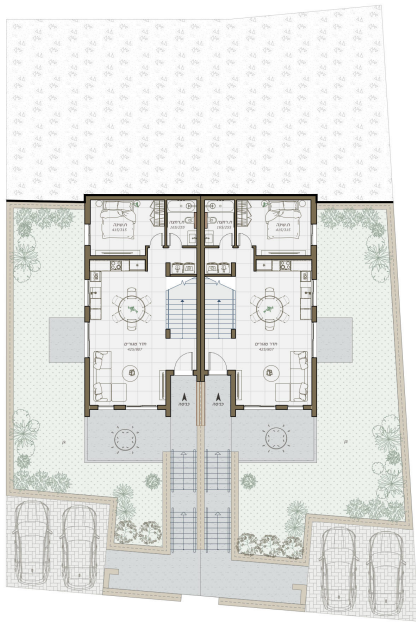


04.06.2026

TWO FAMILIES 1207-2, 124.85 M²

Teneh Omarim, TOMA-1207-2

קומה ראשונה



סוג הנכס

שטח מגרש, מ"ר

שטח במ"ר

חדרים

קומות

מרפסת

גינה

תאריך מסירה משוער

דו משפחתי

362

124.85

4

1

ק

ק

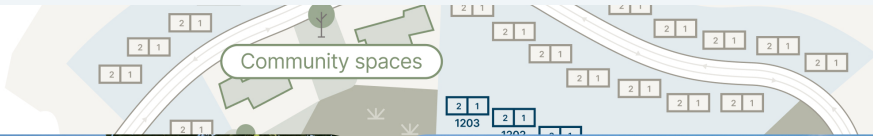
3Q 2029

PRICE

1 990 000 ₪

HOUSE LOCATION

EXTERIOR



INTERIOR




Our new neighborhood is carefully designed along the mountainside with a breathtaking desert view – 135 earth-toned homes that look like the contractor and the desert decided to start an Instagram page together. The architectural vision is refreshingly original – homes are arranged in a fan shape, with each garden offering a unique perspective, perfect for stargazing right from your backyard. Smart planning creates a sense of community while allowing for a bit of privacy for each family.

[DOWNLOAD BROCHURE \(PDF\)](#)


- 200 families live in this community
- 135 residential units located here
- 20 minutes from Beer Sheva
- 2028 delivery date

CONTACTS



SHLOMO BEN DAVID
International Sales Manager

+16468094577 +972534648451



CHECK OUT THE ASSET PAGE ON OUR WEBSITE

On the website you will see more detailed information about the lot, and you will also be able to leave a request for a consultation