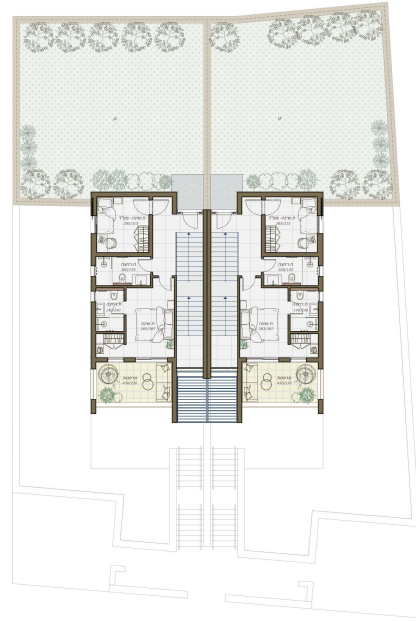
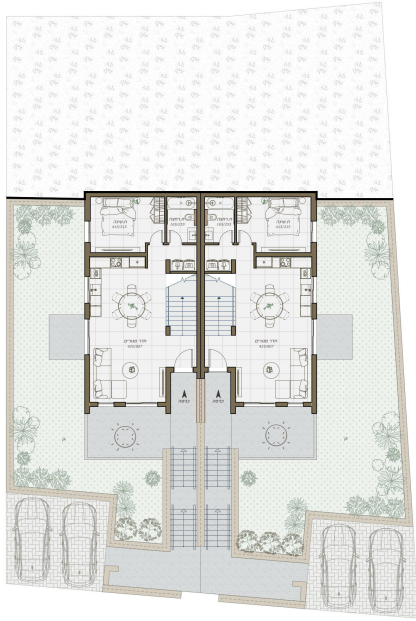


TWO FAMILIES 1206-2, 124.85 M²

Teneh Omarim, TOMA-1206-2

קומה ראשונה



סוג הנכס

דו משפחתי

PRICE

שטח מגרש, מ"ר

332

1 990 000 ₪

שטח במ"ר

124.85

חדרים

4

קומות

1

מרפסת

ק

גינה

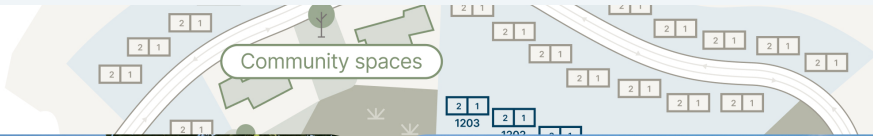
ק

תאריך מסירה משוער

3Q 2029

HOUSE LOCATION

EXTERIOR



INTERIOR



Our new neighborhood is carefully designed along the mountainside with a breathtaking desert view – 135 earth-toned homes that look like the contractor and the desert decided to start an Instagram page together. The architectural vision is refreshingly original – homes are arranged in a fan shape, with each garden offering a unique perspective, perfect for stargazing right from your backyard. Smart planning creates a sense of community while allowing for a bit of privacy for each family.

DOWNLOAD BROCHURE (PDF)

200

families live in this community

20

minutes from Beer Sheva

135

residential units located here

2028

delivery date

CONTACTS



SHLOMO BEN DAVID

International Sales Manager

+16468094577 +972534648451



CHECK OUT THE ASSET PAGE ON OUR WEBSITE

On the website you will see more detailed information about the lot, and you will also be able to leave a request for a consultation