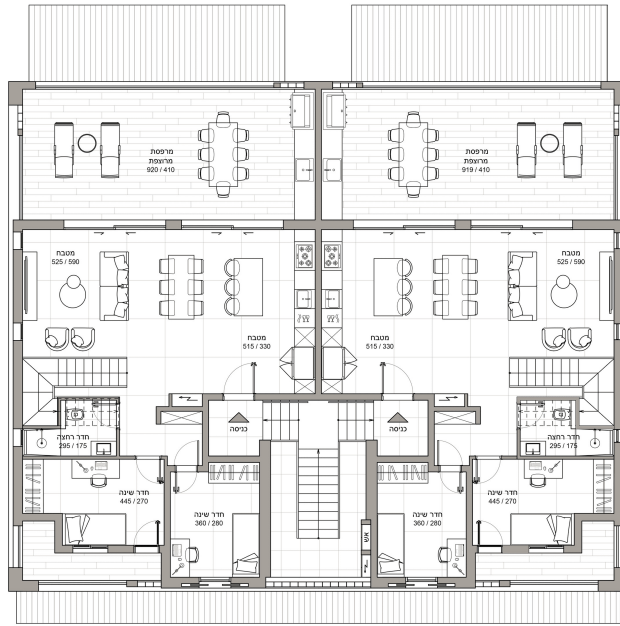


04.06.2026

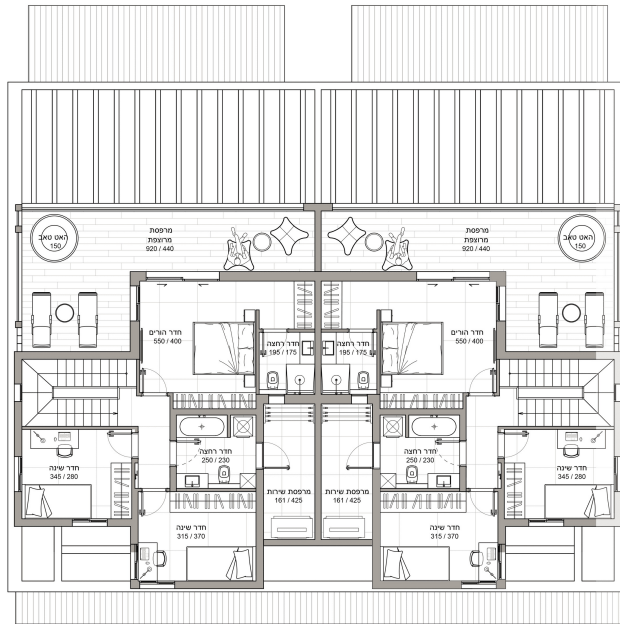
DUPLEXES 2025-4, 149 M²

Yeruham, YERU-2025-4

FIRST FLOOR



SECOND FLOOR



Property type

Duplexes

PRICE

Rooms

6

₪ 2 260 000

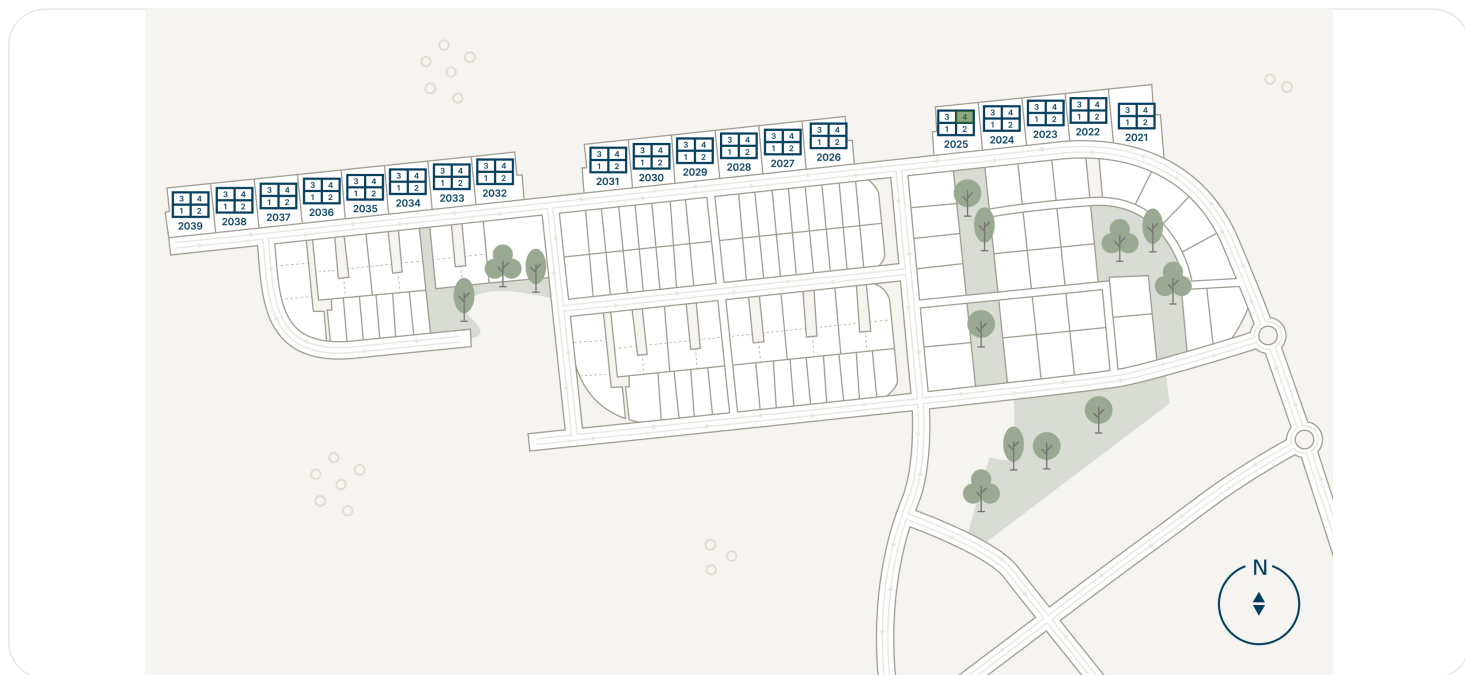
Balcony, m²

46

Planned delivery date

4Q 2028

HOUSE LOCATION



EXTERIOR



INTERIOR



Seventy-six unique housing units across 19 impressive four-unit buildings are underway, offering the highest construction standards seen in the city. Each unit is meticulously designed with maximum privacy in mind: private entrances, spacious garden apartments of 116 square meters with generous 117-square-meter yards, and duplex apartments with luxurious 45-square-meter balconies. Even the dream of a private pool can come true here. Every detail highlights the connection between private living spaces and the surrounding natural desert beauty.

DOWNLOAD BROCHURE (PDF) 

11,200

residents live in the city

25

minutes by car from
Be'ersheva

76

number of units

2028

delivery date

CONTACTS



SHLOMO BEN DAVID

International Sales Manager

 +16468094577  +972534648451



CHECK OUT THE ASSET PAGE ON OUR WEBSITE

On the website you will see more detailed information about the lot, and you will also be able to leave a request for a consultation